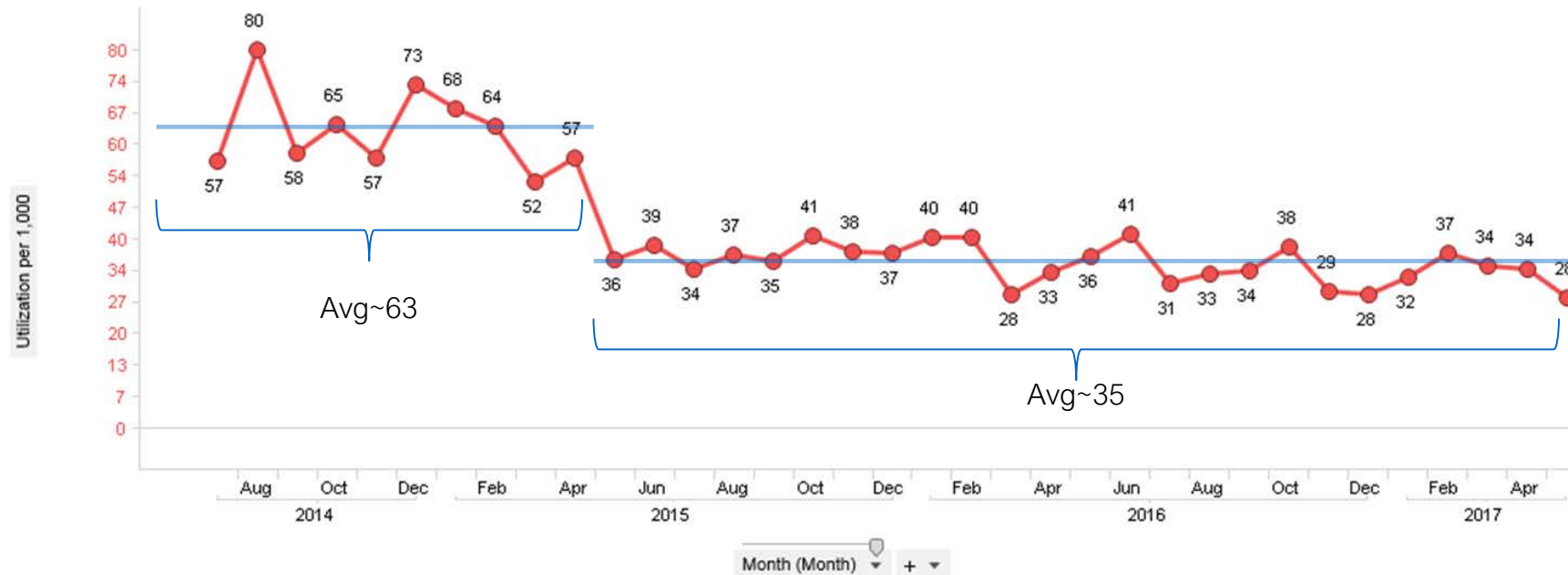


ST. JOSEPH'S CARE COORDINATION NETWORK
OPERATIONAL AND CLINICAL PERFORMANCE
OUTCOMES



A Member of Trinity Health

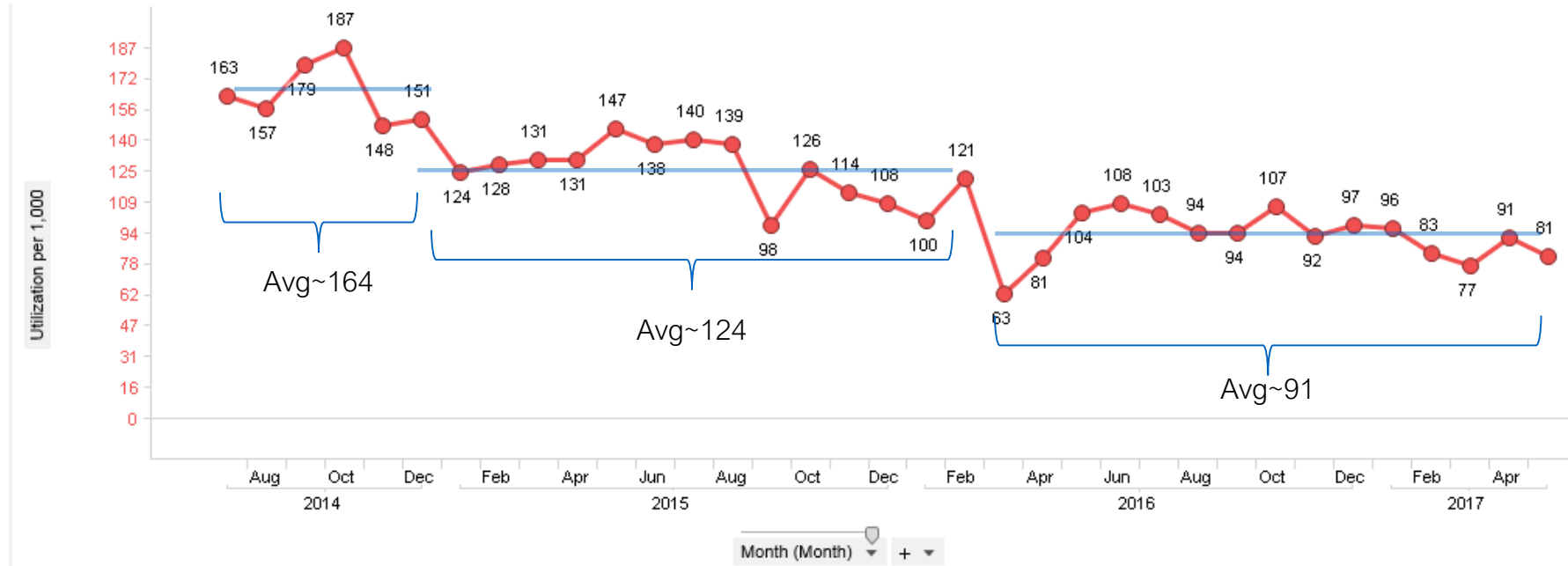
Inpatient Admissions PMPM



- Clear, statistically significant drop in inpatient utilization, from 63 Admissions PMPM to 35 Admissions PMPM. **This represents a 44% reduction.**
- From July 2016 forward we have been close to yet another downward shift.



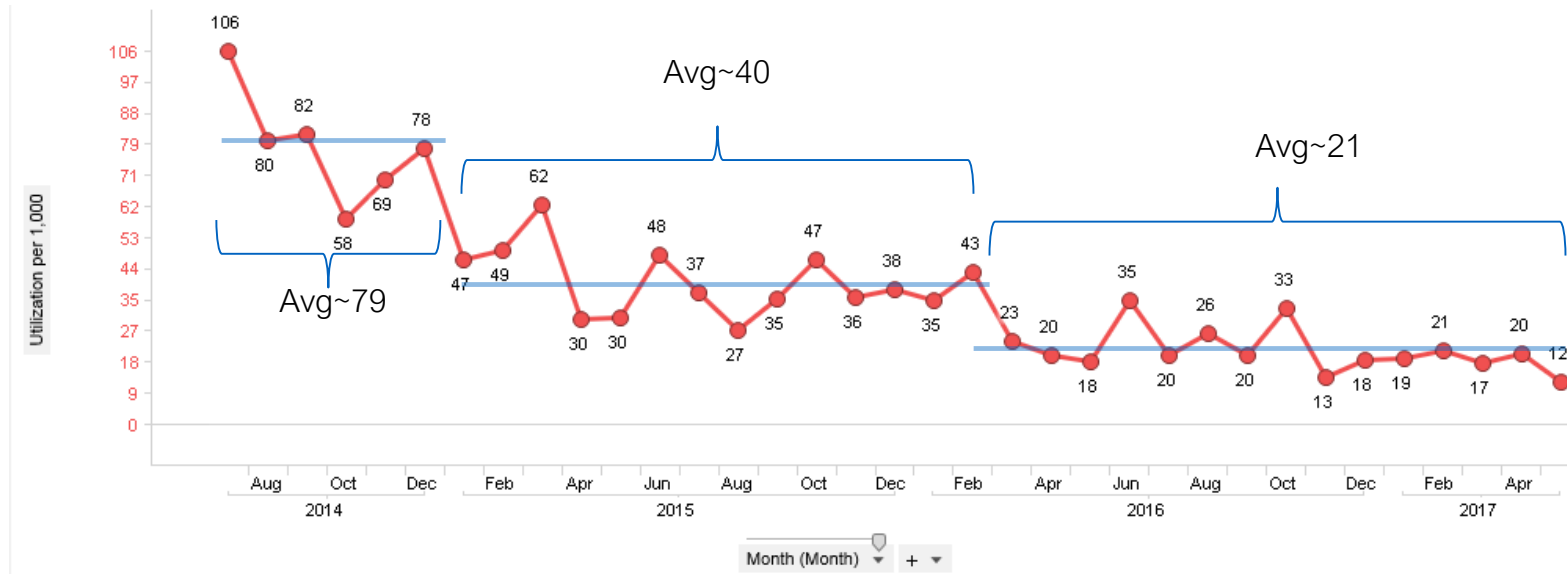
ED Visits PMPM



- A couple of clear, statistically significant drops in ED utilization. First from 164 PMPM to 124 PMPM, and then from 124 PMPM to 91 PMPM.
 - 164 to 124 -- 24% reduction
 - 124 to 91-- 27% reduction
 - 164 to 91-- 45% reduction



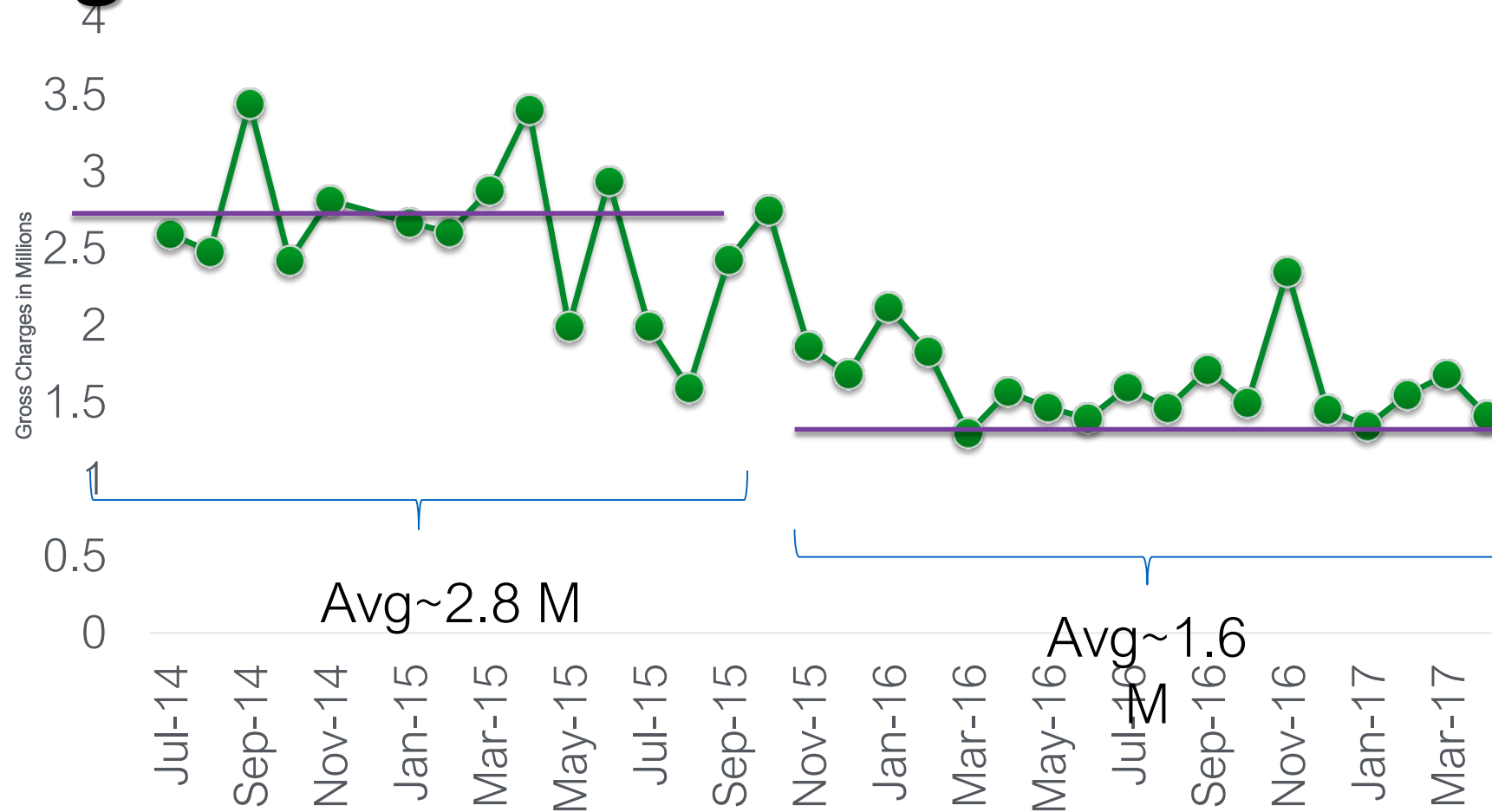
CPEP Visits PMPM



- Again, a couple of clear, statistically significant drops in utilization. First from 79 PMPM to 40 PMPM, and then from 40 PMPM to 21 PMPM.
 - 79 to 40-- 49% reduction
 - 40 to 21-- 48% reduction
 - 79 to 21-- 73% reduction



Charges PMPM



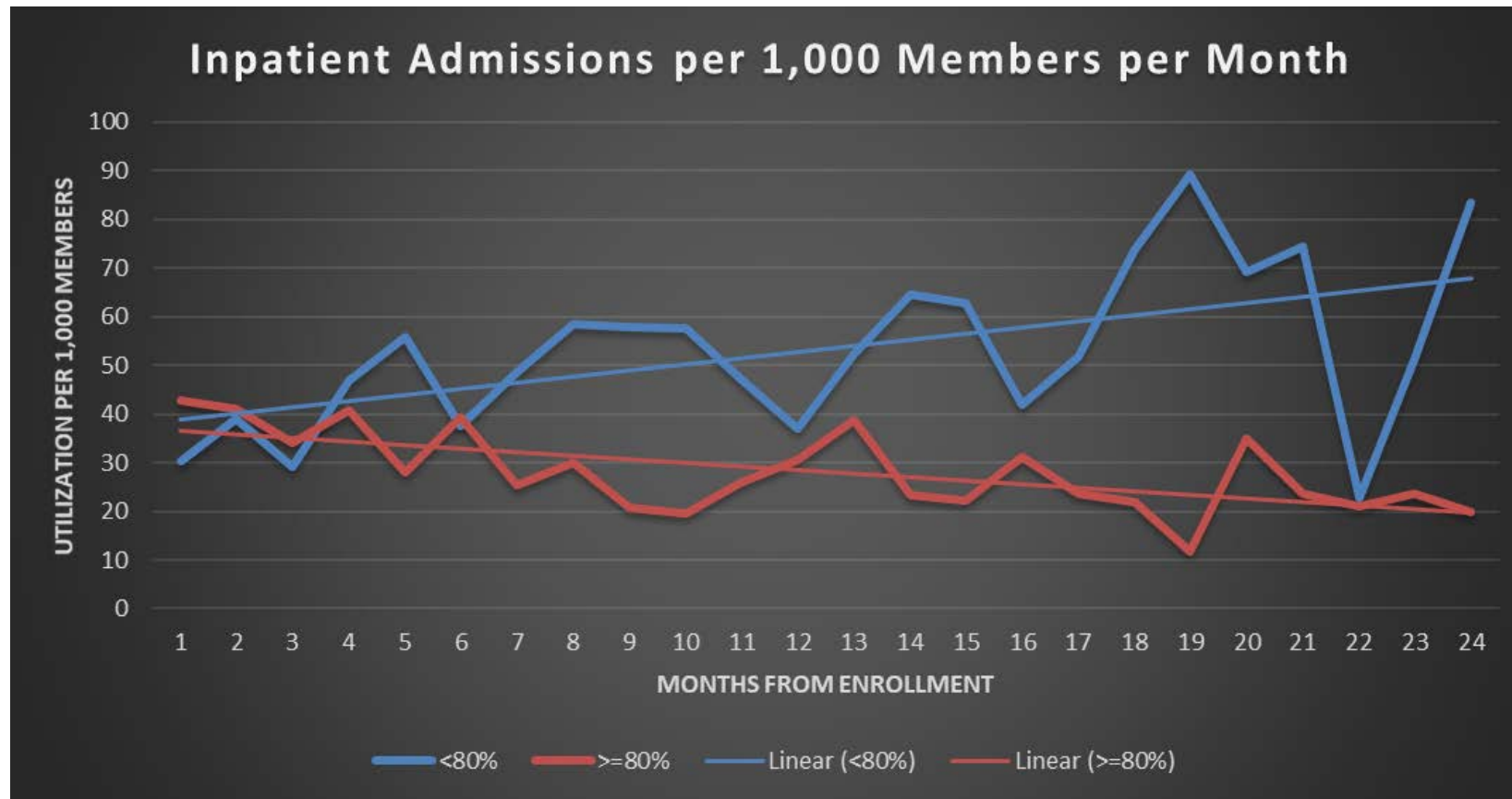
- Statistically significant decrease of 1.2M PMPM (43%).



Inpatient Admissions PMPM by month of enrollment

- Instead of looking at utilization by calendar month the graph on the next slide depicts utilization by month of enrollment. In other words, month 1 contains everyone who was enrolled for 1 month or more. Month 2 contains everyone enrolled 2 or more months, etc.
- The **blue** lines represent enrollees who engaged with their care manager **less than 80%** of the months they were enrolled and their utilization trend.
- The **red** lines represent enrollees who engaged with their care manager **80% or more** of the months they were enrolled and their utilization trend.

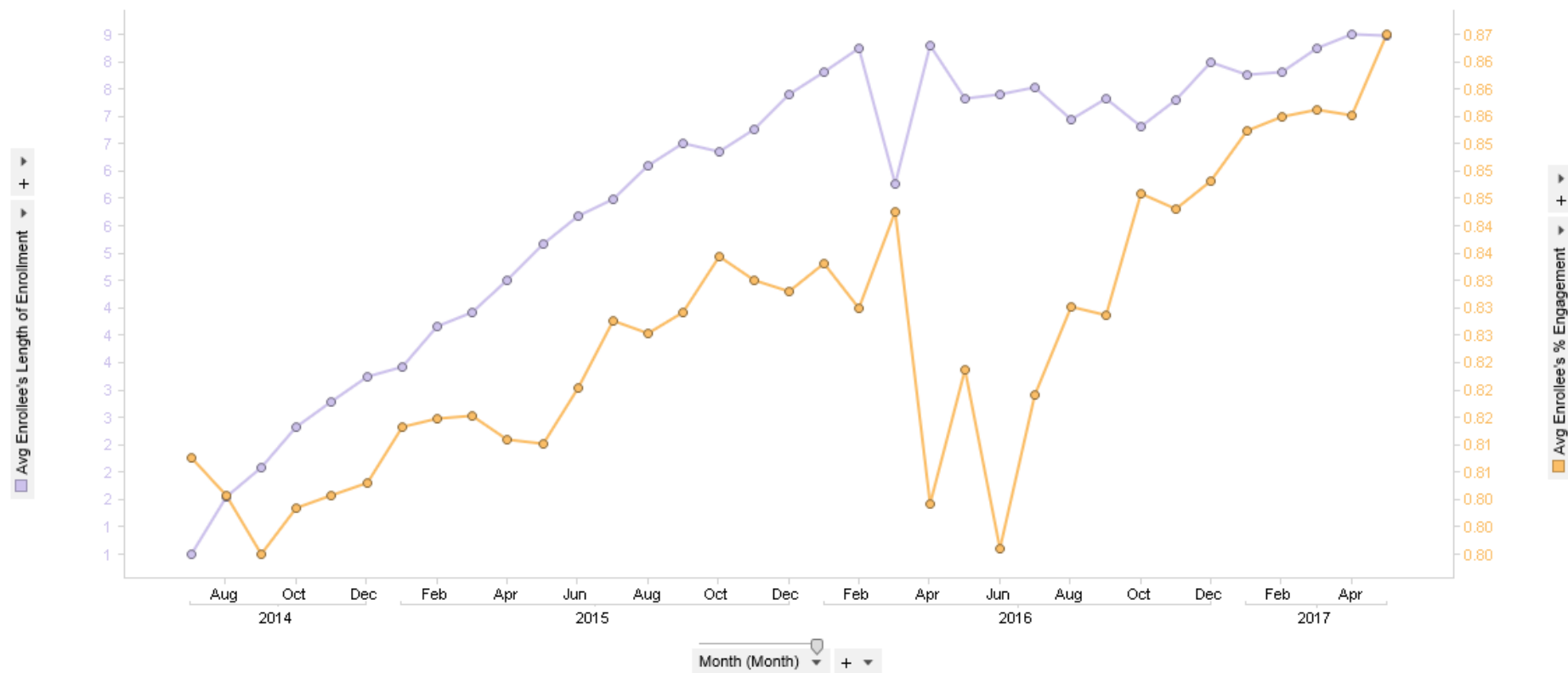




- We can make two conclusions from the graph:
 - Enrollees who are more engaged with their Care Manager show a decrease in utilization, whereas those not engaged show an increase.
 - Enrollees show a greater decrease in utilization the longer they are enrolled (as long as they are engaged too).
 - As a side note, the graph/conclusions look similar for ED Visits, CPEP Visits, and Charges. They're just not pictured here.



The 1,2 Punch: Longer Enrollment & Engagement



- From the prior slide we learned that utilization drops the longer someone is enrolled and the more they are engaged. This slide demonstrates that since the start of the Health Home the average enrollee's length of enrollment (shown in purple) and engagement (shown in orange) have steadily grown.

